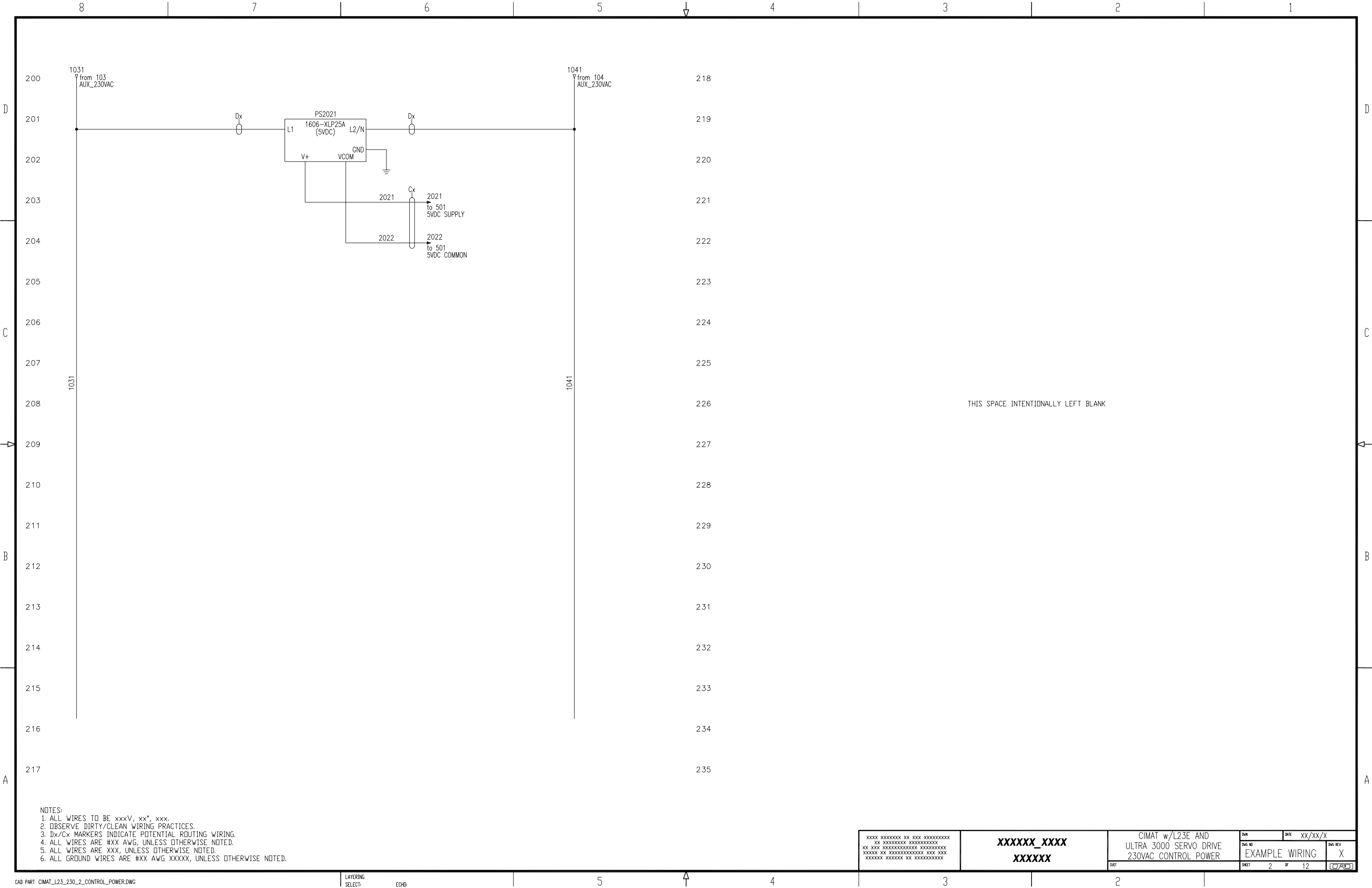


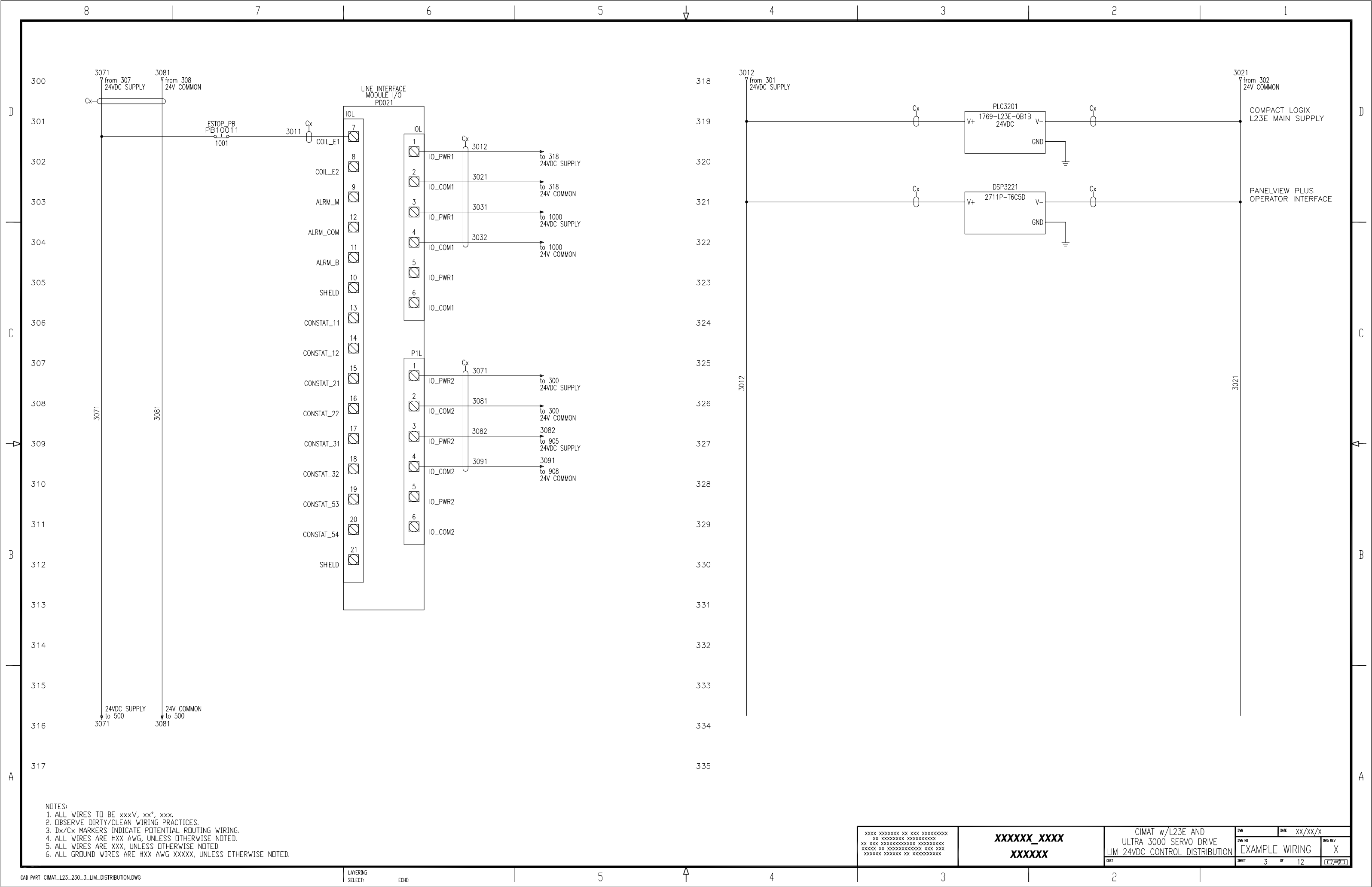
NOTES:
1. ALL WIRES TO BE xxxV, xx*, xxx.
2. OBSERVE DIRTY/CLEAN WIRING PRACTICES.
3. Dx/Cx MARKERS INDICATE POTENTIAL ROUTING WIRING.
4. ALL WIRES ARE #XX AWG, UNLESS OTHERWISE NOTED.
5. ALL WIRES ARE XXX, UNLESS OTHERWISE NOTED.
6. ALL GROUND WIRES ARE #XX AWG XXXXX, UNLESS OTHERWISE NOTED.

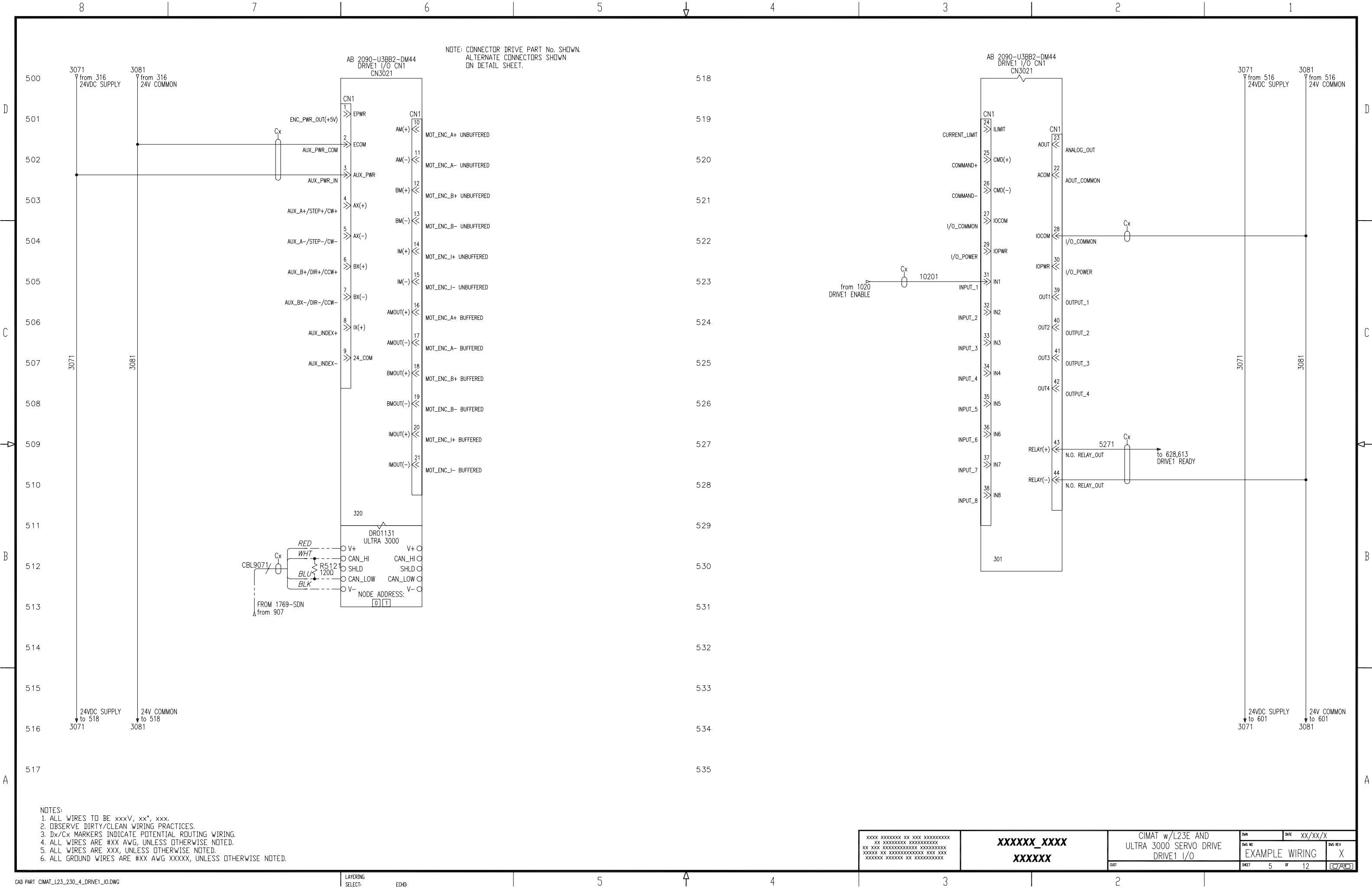
XXXXXXXX_XXXX XXXXXX		CIMAT w/L23E AND ULTRA 3000 SERVO DRIVES 230VAC POWER DISTRIBUTION	DWG NO EXAMPLE WIRING	DATE xx/xx/x	DWG REV X
CUST		SHEET 1	OF 12	CAD	



NOTES:
1. ALL WIRES TO BE xxxV, xx*, xxx.
2. OBSERVE DIRTY/CLEAN WIRING PRACTICES.
3. Dx/Cx MARKERS INDICATE POTENTIAL ROUTING WIRING.
4. ALL WIRES ARE #XX AWG, UNLESS OTHERWISE NOTED.
5. ALL WIRES ARE XXX, UNLESS OTHERWISE NOTED.
6. ALL GROUND WIRES ARE #XX AWG XXXXX, UNLESS OTHERWISE NOTED.

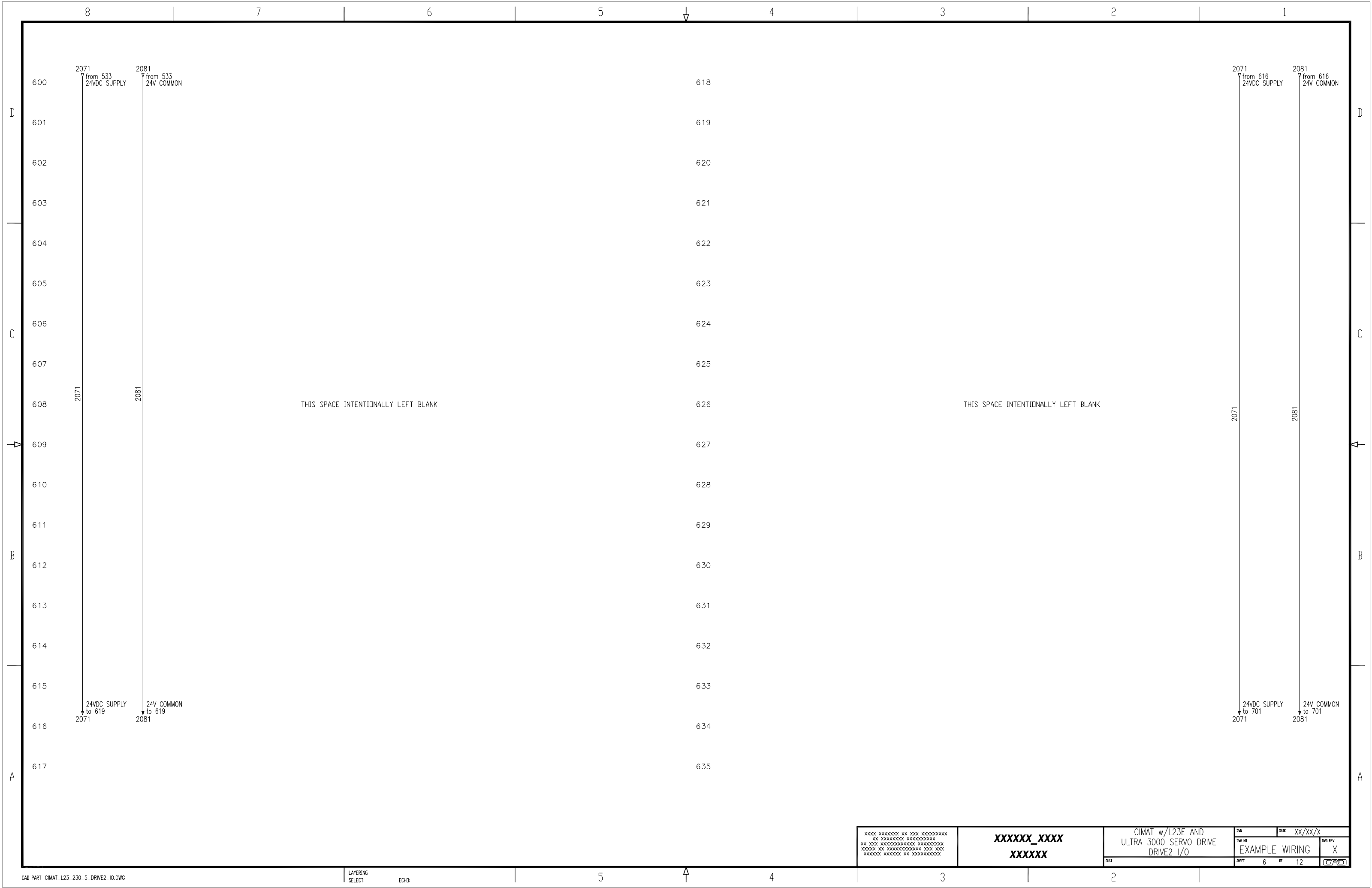
XXXX XXXXXXXX XX XXX XXXXXXXXXX XX XXXXXXXXXX XXXXXXXXXX XX XXX XXXXXXXXXX XXXXXXXXXX XXXXXX XX XXXXXXXXXX XXX XXX XXXXXX XXXXXX XX XXXXXXXXXX		XXXXXX_XXXX XXXXXX	CIMAT w/L23E AND ULTRA 3000 SERVO DRIVE 230VAC CONTROL POWER		DWG NO EXAMPLE WIRING	DATE XX/XX/X	DWG REV X
CUST			SHEET 2		OF 12	[C/R/D]	

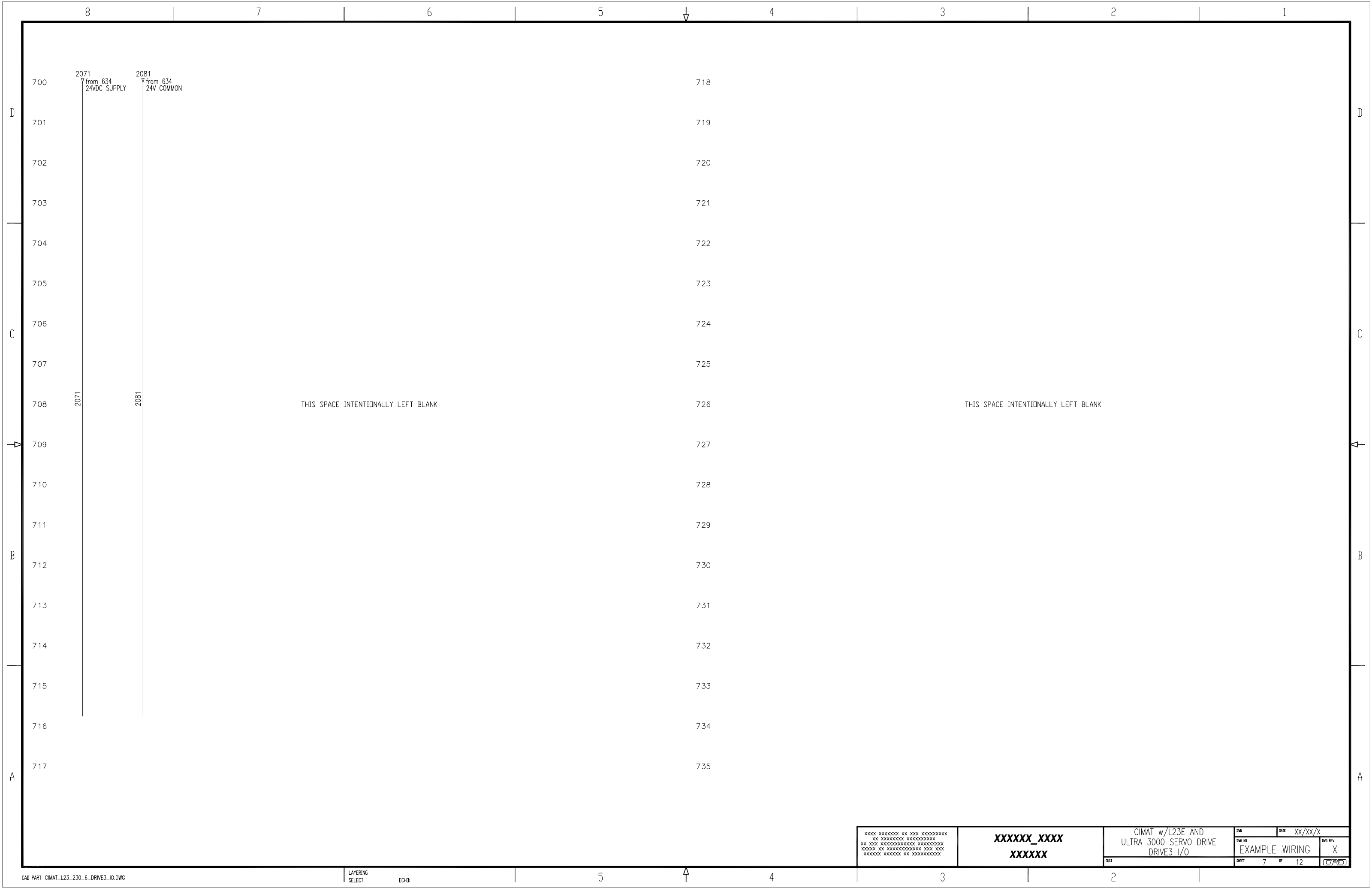


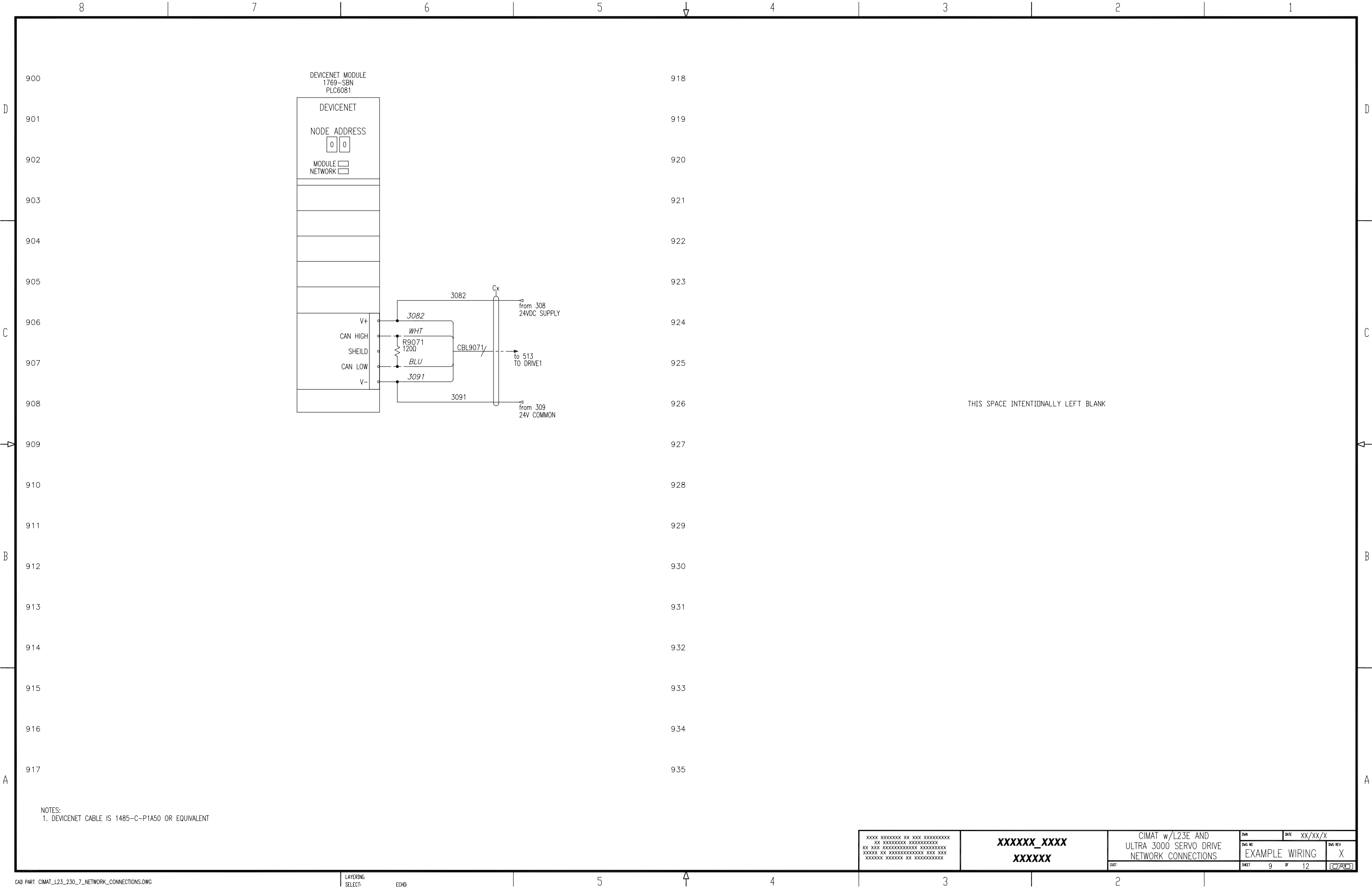


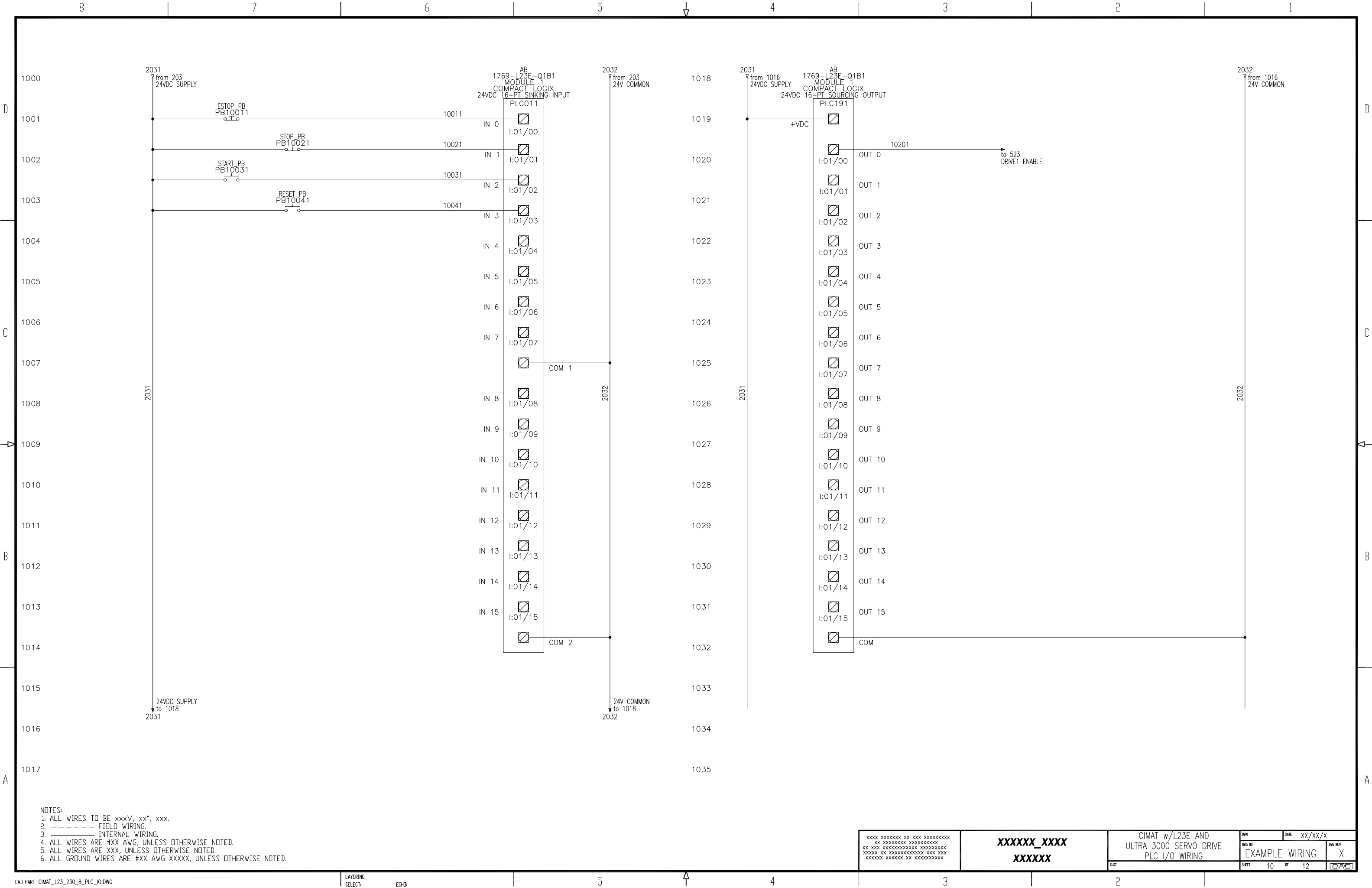
NOTES:
1. ALL WIRES TO BE xxxV, xx*, xxx.
2. OBSERVE DIRTY/CLEAN WIRING PRACTICES.
3. Dx/Cx MARKERS INDICATE POTENTIAL ROUTING WIRING.
4. ALL WIRES ARE #XX AWG, UNLESS OTHERWISE NOTED.
5. ALL WIRES ARE XXX, UNLESS OTHERWISE NOTED.
6. ALL GROUND WIRES ARE #XX AWG XXXXX, UNLESS OTHERWISE NOTED.

XXXX XXXXXXXX XX XXX XXXXXXXXXX XX XXXXXXXXXXXXXXXXXXXXXXXX XXXXXX XX XXXXXXXXXXXXXXXX XXX XXX XXXXXXXX XXXXXXXX XX XXXXXXXXXXXXXXXX		XXXXXX_XXXX XXXXXX		CIMAT w/L23E AND ULTRA 3000 SERVO DRIVE DRIVE1 I/O		DWG NO EXAMPLE WIRING	DATE XX/XX/X	DWG REV X
SHEET 5		OF 12		CUT		[CRD]		



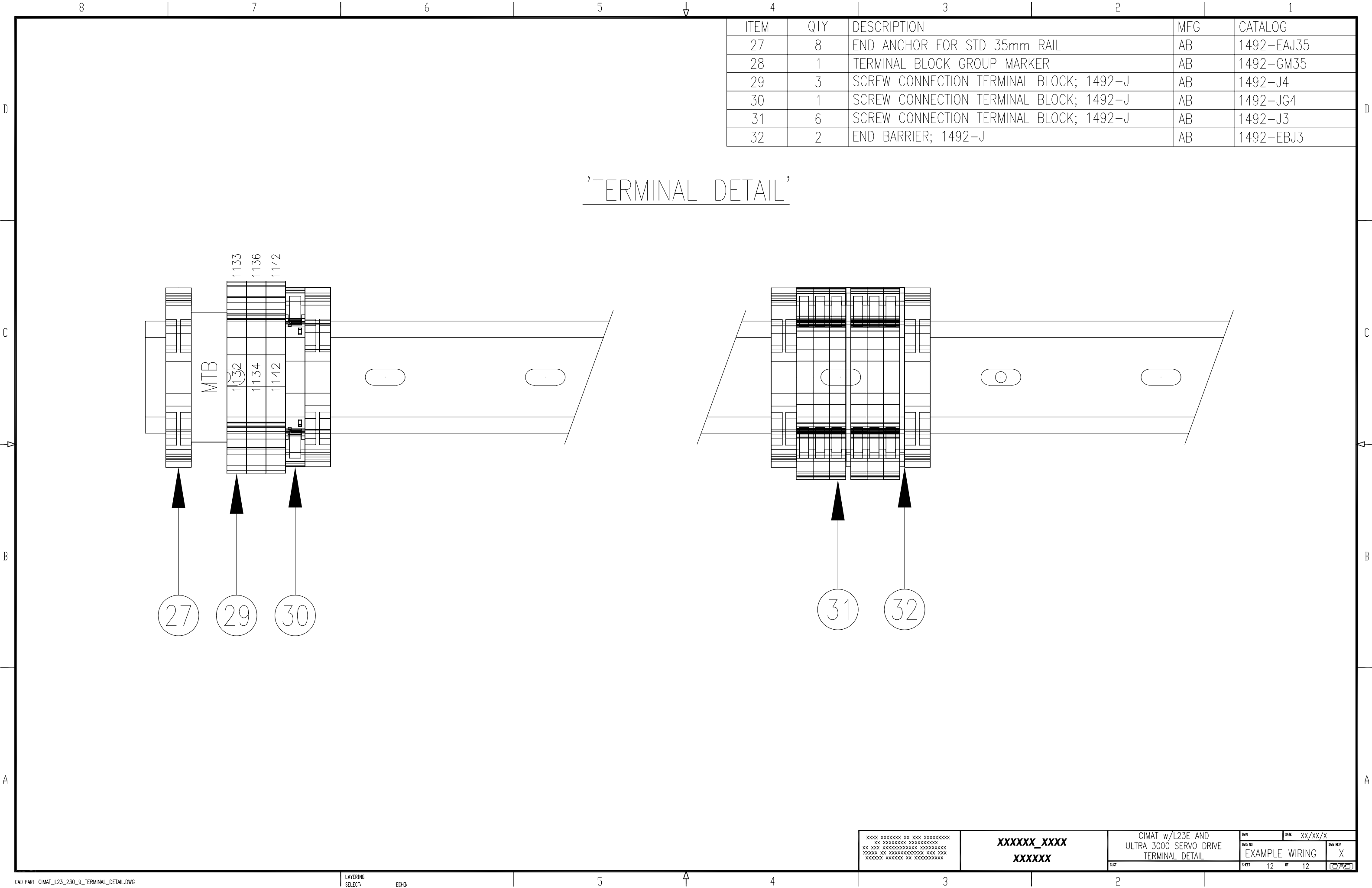


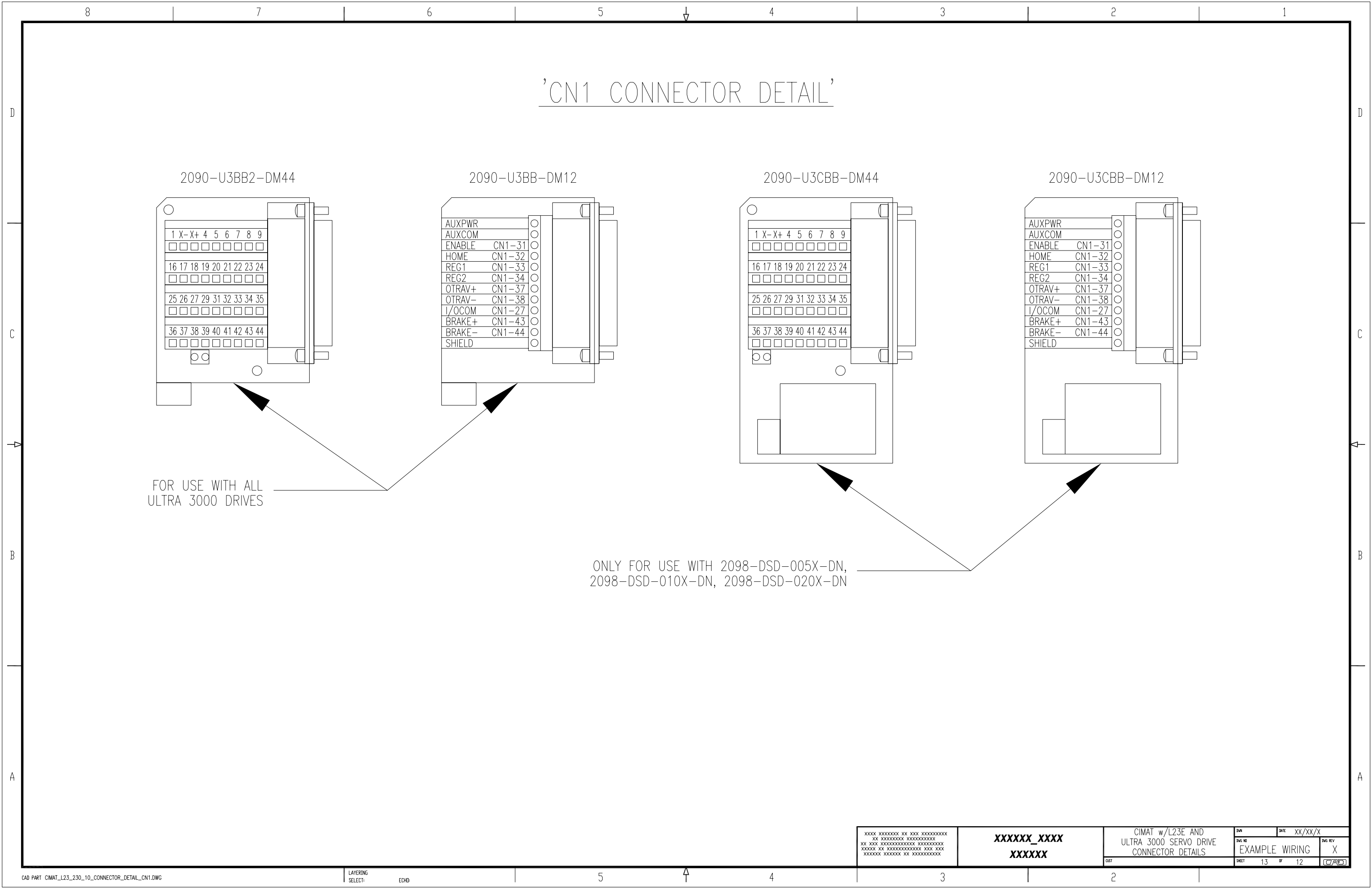


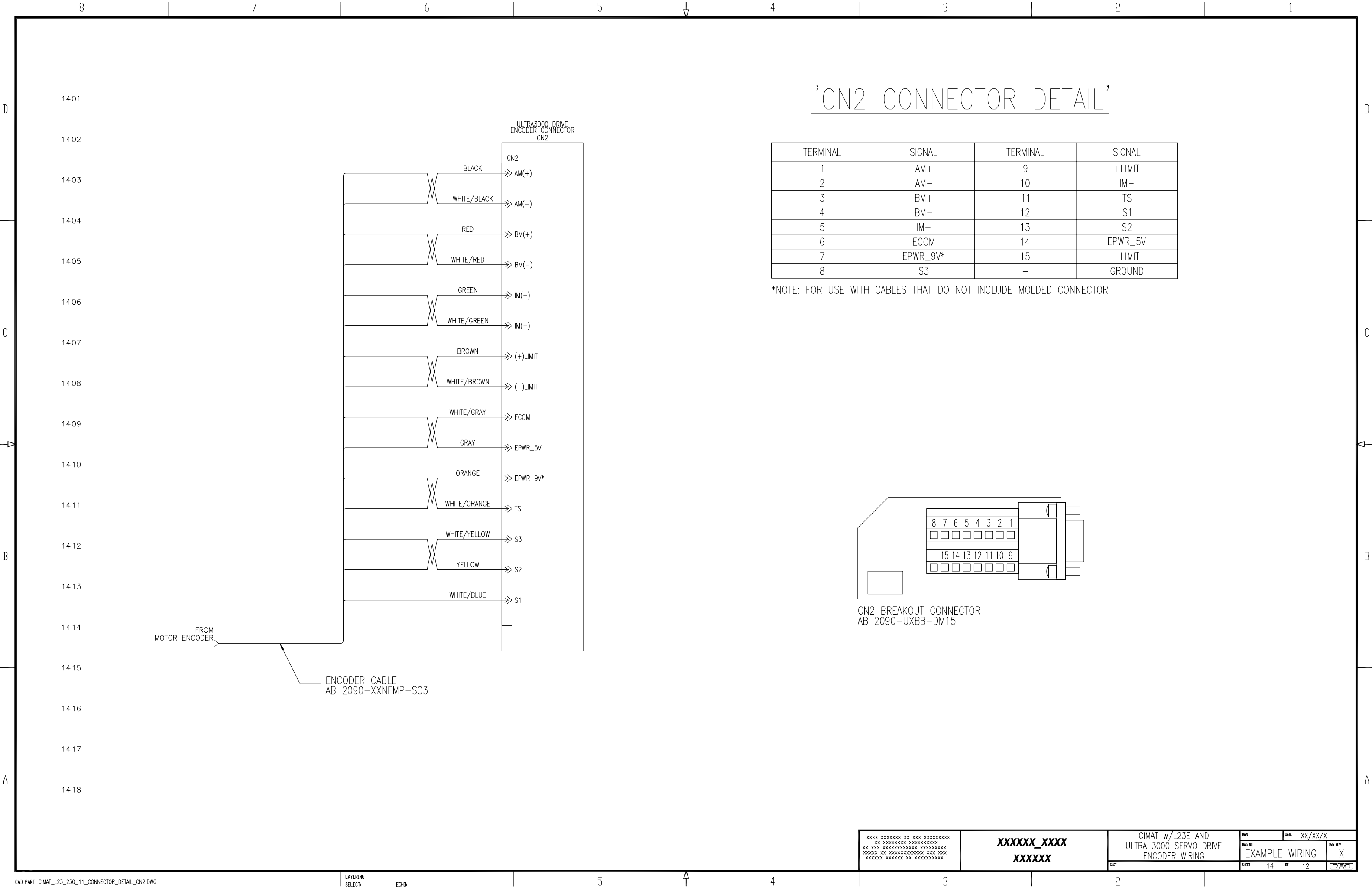


NOTES:
1. ALL WIRES TO BE xxxV, xx*, xxx.
2. ----- FIELD WIRING.
3. _____ INTERNAL WIRING.
4. ALL WIRES ARE #XX AWG, UNLESS OTHERWISE NOTED.
5. ALL WIRES ARE XXX, UNLESS OTHERWISE NOTED.
6. ALL GROUND WIRES ARE #XX AWG XXXXX, UNLESS OTHERWISE NOTED.

XXXX XXXXXXXX XX XXX XXXXXXXXXX XX XXXXXXXXXXXX XXXXXXXXXXXX XXXXXX XX XXXXXXXXXXXXXXX XXX XXX XXXXXXXX XXXXXX XX XXXXXXXXXXXX		XXXXXX_XXXX XXXXXX	CIMAT w/L23E AND ULTRA 3000 SERVO DRIVE PLC I/O WIRING	DWG NO EXAMPLE WIRING	DATE XX/XX/X	DWG REV X
CUST		SHEET 10 OF 12		DWG REV [CAD]		



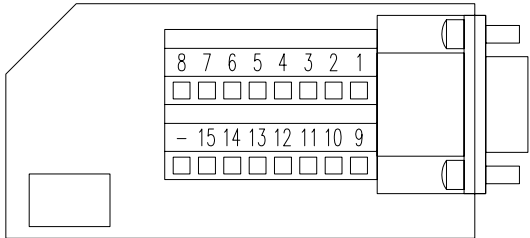




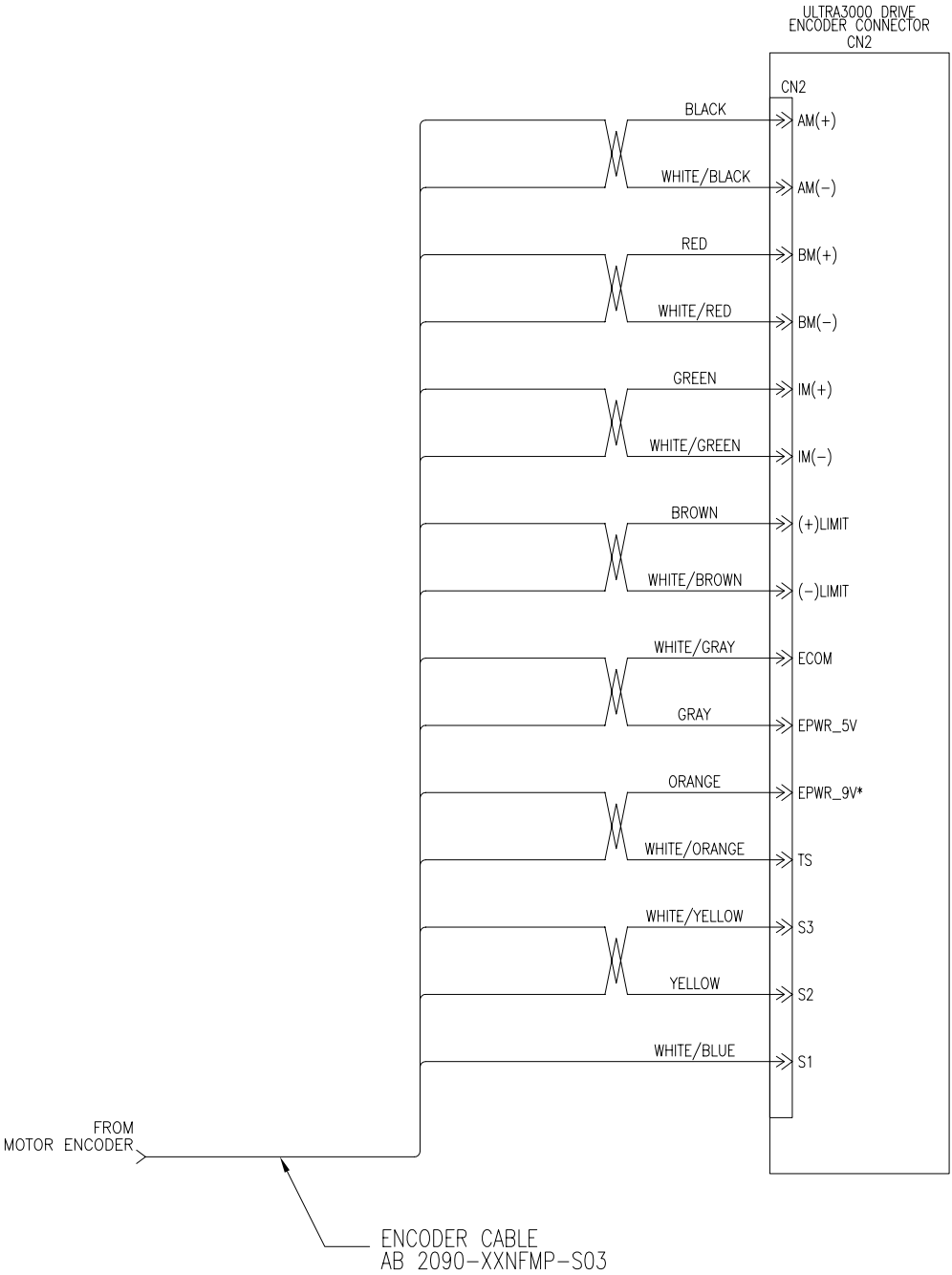
'CN2 CONNECTOR DETAIL'

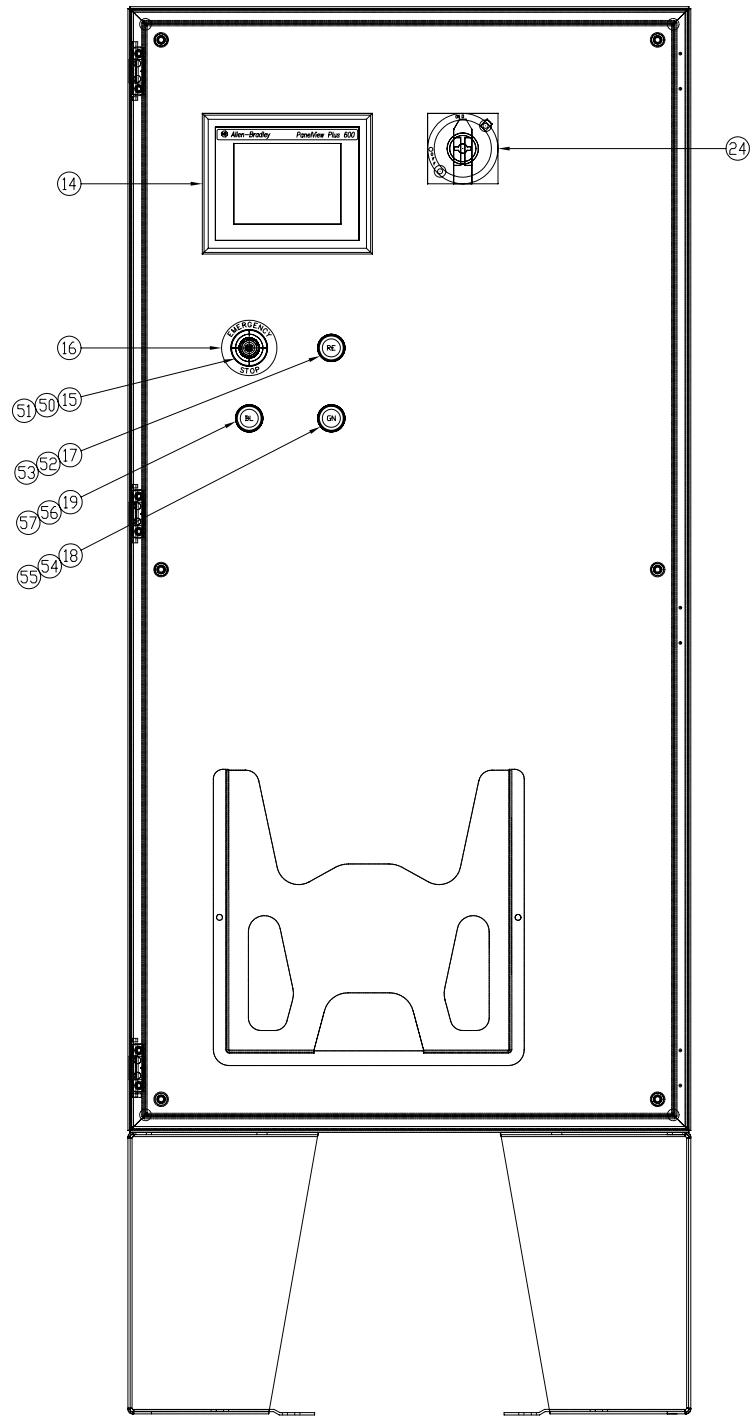
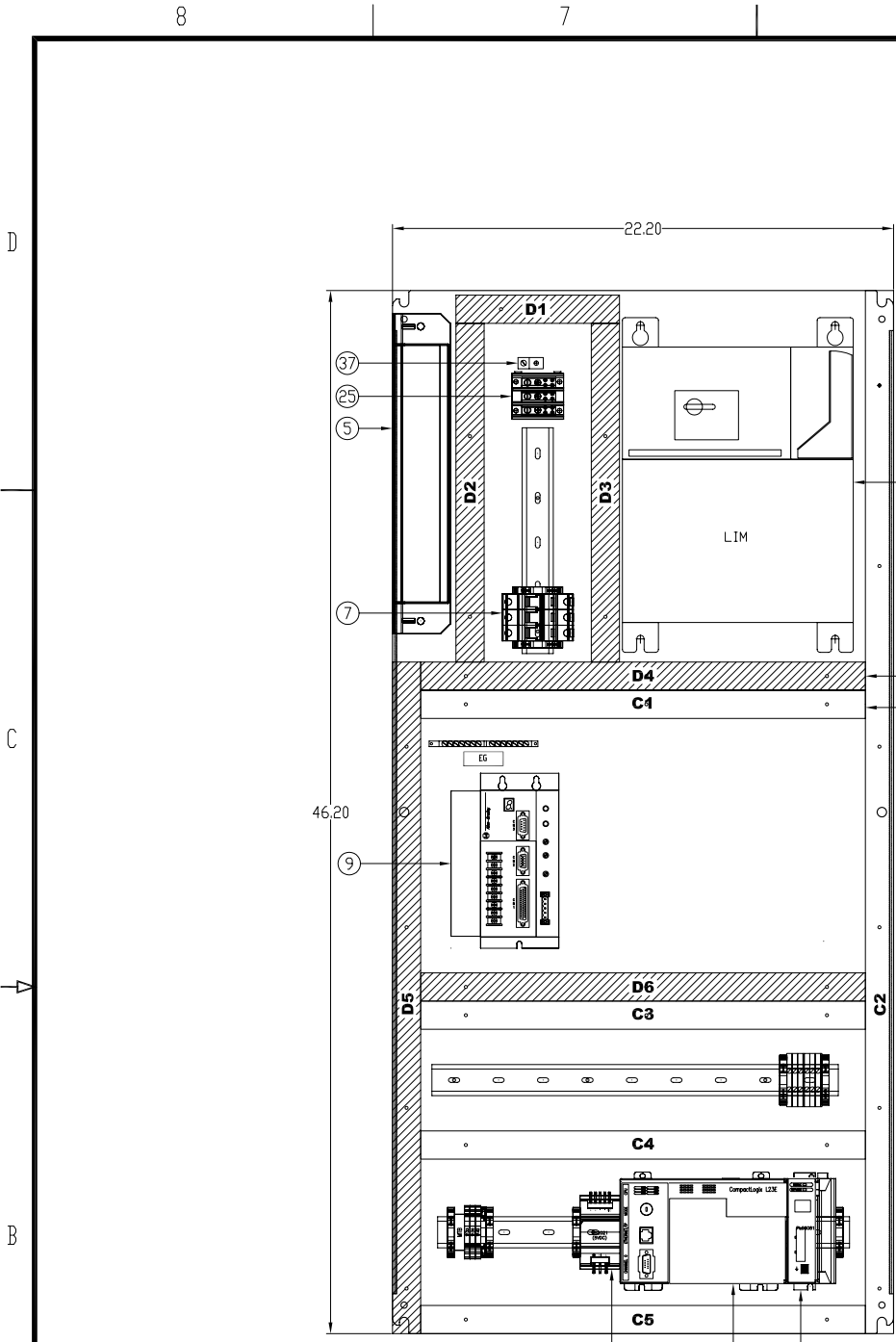
TERMINAL	SIGNAL	TERMINAL	SIGNAL
1	AM+	9	+LIMIT
2	AM-	10	IM-
3	BM+	11	TS
4	BM-	12	S1
5	IM+	13	S2
6	ECOM	14	EPWR_5V
7	EPWR_9V*	15	-LIMIT
8	S3	-	GROUND

*NOTE: FOR USE WITH CABLES THAT DO NOT INCLUDE MOLDED CONNECTOR



CN2 BREAKOUT CONNECTOR
AB 2090-UXBB-DM15





2			1	
ITEM	QTY	DESCRIPTION	MFG	CATALOG
1	1	CONCEPT ENCLOSURE TYPE 12/13 48Hx24Wx12D	HOF	CSD483612
2	1	PANEL FOR ENCLOSURE 45Hx22W	HOF	CP4836
3	1	FLOOR STAND KIT 12in. QTY(2)	HOF	AFK1212
4	1	LINE INTERFACE MODULE 230VAC 50AMP	AB	2094-AL50S
5	1	AC LINE FILTER, UNIVERSAL, 30 AMP, 500VAC, 3 PHASE	AB	2090-XXLF-X330B
6	-	-	-	-
7	3	BREAKER 3POLE 10AMP	AB	1492-SP3B100
8	-	-	-	-
9	1	DRIVE, 5A/15A, 230VAC, ULTRA3000 W/DEVICENET/INDEX	AB	2098-DS0-010X-DN
10	1	COMPACT LOGIX EMBEDDED SYSTEM 16IN/16OUT	AB	1769-L23E-QB1B
11	1	COMPACT LOGIX DEVICENET CARD	AB	1769-SDN
12	-	-	-	-
13	1	POWER SUPPLY, 25 W, 5V, 120/230V AC INPUT VOLTAGE	AB	1606-XLP25A
14	1	PANELVIEW PLUS 600 TOUCH, COLOR, RS-232 Only, DC POWER	AB	2711P-T6C5D
15	1	PUSH BUTTON - MUSHROOM (PUSH-PULL) 40mm RED	AB	800FP-MT44
16	1	EMERGENCY STOP LEGEND 60mm ROUND YELLOW/BLACK TEXT	AB	800F-15YE112
17	1	PUSH BUTTON - MOMENTARY, EXTENDED RED	AB	800FP-E402
18	1	PUSH BUTTON - MOMENTARY, FLUSH GREEN	AB	800FP-F301
19	1	PUSH BUTTON - MOMENTARY, FLUSH BLUE	AB	800FP-F611
20	4	800F MOUNTING LATCH	AB	800F-ALP
21	3	800F CONTACT BLOCK N.C.	AB	800F-X01
22	3	800F CONTACT BLOCK N.O.	AB	800F-X10
23	-	-	-	-
24	1	ROTARY VARIABLE-DEPTH OPERATOR 12in. RED/YELLOW	AB	140U-H-RVM12R
25	1	POWER DISTRIBUTION TERMINAL	AB	1492-PDM3141
26	3	STANDARD 35mm MOUNTING RAIL	AB	199-DR1
27	8	END ANCHOR FOR 35mm DIN GRAY	AB	1492-EAJ35
28	1	TERMINAL BLOCK GROUP MARKER FOR 35mm DIN	AB	1492-GM35
29	3	SCREW CONNECTION TERMINAL BLOCK; 1492-J	AB	1492-J4
30	1	SCREW CONNECTION TERMINAL BLOCK; 1492-J	AB	1492-JG4
31	6	SCREW CONNECTION TERMINAL BLOCK; 1492-J	AB	1492-J3
32	2	END BARRIER; 1492-J	AB	1492-EBJ3
33	-	NARROW SLOT WIRING DUCT 1X4in. GRAY	PANDUIT	F1X4LG6
34	-	NARROW SLOT WIRING DUCT COVER 1in. GRAY	PANDUIT	C1LG6
35	-	NARROW SLOT WIRING DUCT 1X4in. WHITE	PANDUIT	F1X4WH6
36	-	NARROW SLOT WIRING DUCT COVER 1in. WHITE	PANDUIT	C1WH6
37	1	COPPER GROUND CONNECTOR	T&B	31003
38	-	-	-	-
39	-	BULK DEVICENET CABLE (50ft.)	AB	1485C-P1A50
40	-	-	-	-

NOTES:
1. WIREWAYS MARKED Cx/Dx INDICATE CLEAN/DIRTY SIGNAL/POWER
2. FOR FURTHER INFORMATION ON SYSTEM DESIGN FOR CONTROL OF ELECTRICAL NOISE SEE ROCKWELL PUBLICATION #GMC RM001_-EN-P

XXXX XXXXXXXX
XX XXXXXXXXXXXXXXXX
XXXXXX XX XXXXXXXXXXXXXXXX
XXXXXXXX XXXXXXXXXX

XXXXXX_XXXX
XXXXXX

CIMAT w/L23E AND
ULTRA 3000 SERVO DRIVE
PANEL LAYOUT

DATE XX/XX/X
TWC NO
SHEET 15 OF 12

EXAMPLE WIRING
X
TWC REV